



EZ MUSIC

James Tubbritt Irish Acts Studio

EZ MUSIC
v2.0

Table of Contents

Introduction.....	3
Overview.....	4
System Requirements.	4
Launching EZ MUSIC for the first time.....	5
Graphical User Interface Overview.....	6
Main Interface.....	7
File Menu.....	8
Midi Interface.....	9
Midi Control Values.....	10
Songs & Folders.....	11
Scanning Sheet Music (Adding a Song).....	13
Adding Sheet Music by other means.	14
Adding a Lyrics Song.....	17
Adding Backing Tracks.....	18
Exporting Backing Tracks or Sheet Music.....	19
Keyboard Short Cuts.....	20
EZ MUSIC on more than one PC.	22
Tips and Suggestions.....	22

Introduction

Thank you for purchasing EZ MUSIC.

EZ MUSIC is an application for viewing Sheet Music, Song Lyrics, and for playing Backing Tracks in the Studio and on-stage Live.

As a musician myself, I found it very frustrating that there was no easy way to take a sheet of music, scan it into a program and have it easily displayed on my Tablet PC.

The procedure often involved having to use a number of different programs in order to get my sheet music from the scanner into the software I was using to view the music. I always found the results never matched my expectations because there were so many different optimal settings for displaying sheet music on a screen. Probably what was worse was that for every page I scanned, it generated a JPEG file I had to name and manage. Quickly that turned into a few hundred files. Then there's attaching them one by one to the Sheet Music program in order, making no mistakes and so on. In the end it got to the point where it was simply not worth the effort. It was too complicated and very time consuming to keep so many files organised. It was an unpleasant experience to say the least.

Wouldn't it be nice if one single program could do it all and there were no files to deal with, ever.

This is where EZ MUSIC comes in. A program for musicians written by a musician.

EZ MUSIC is a completely self contained program. It scans sheet music directly into it's own database and when doing that, it will never ask you to name a file. You will not even see any files generated. It even stores the lyrics of songs. If you use backing tracks, you can also store and play them with EZ MUSIC. It supports WAV, MP3 and Midi Files. Imported backing tracks are automatically memorised by EZ MUSIC. What that means is EZ MUSIC does not depend on external links to any source files for any content. EZ MUSIC is in fact making them completely obsolete by memorise and managing everything for you with it's powerful database engine.

Because everything is self contained under one system, when scanning in sheet music you don't have to worry about optimal image quality, resolutions or file formats like you do with other software. EZ MUSIC automatically does all the work for you because it knows best. It's so clever that it doesn't even have a save button.

It's a true program for musicians written by a musician.



Irish Acts Studio – <http://www.irishacts.com>

Overview

EZ MUSIC is an application designed for musicians to display sheet music, song lyrics, and for playing backing tracks. It is optimised to work with Touch Screen Tablets in a live setting, and it can be controlled over Midi using any standard midi controller or sequencer.

EZ MUSIC is a completely self contained system from start to finish. EZ MUSIC will directly scan your sheet music into it's own internal database and display the finished results in seconds rendered perfectly. There are no files for you to deal with when scanning your music. EZ MUSIC is designed take care of everything for you.

If you use backing tracks you will never have to browse through your collection ever again. EZ MUSIC makes having to deal with any files completely obsolete as it simply memorises everything and is completely self contained.

Imagine, a song book could contain limitless pages of sheet music, song lyrics, and backing tracks, and you will not see or have to deal with any files or additional software applications.

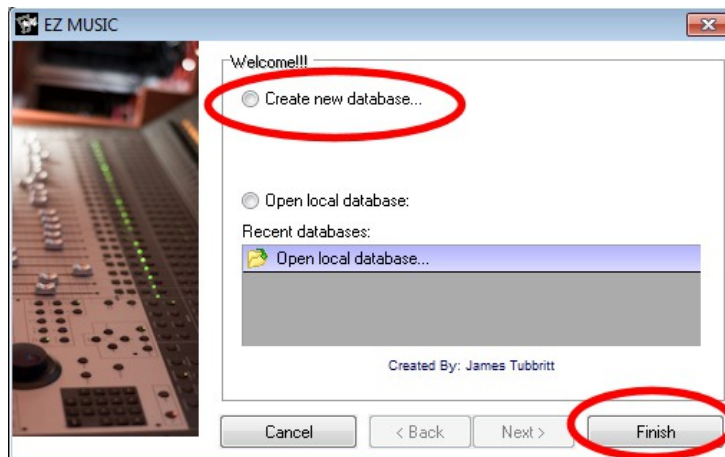
System Requirements.

- Windows XP, VISTA, Win7, or Win8
- 1.6 GHz Processor or higher.
- 2GB of RAM or higher.
- Hard Disk Size. This requirement is simply based on how much data you wish to import into EZ MUSIC. As EZ MUSIC memorises your content, it's hard disk space usage will grow. EZ MUSIC is only limited by the size of your hard disk.
- EZ MUSIC is designed to be viewed in Portrait, and is optimised for a Tablet PC with a display resolution on the shortest side of 768 pixels or higher.
- Touch Screen Optimised.
- Midi Controllable over standard midi using send “Note Values”.
- Fully controllable using a traditional keyboard or mouse. EZ MUSIC has a large number of Short Cuts (hot keys) built into it's system for direct access to any function.

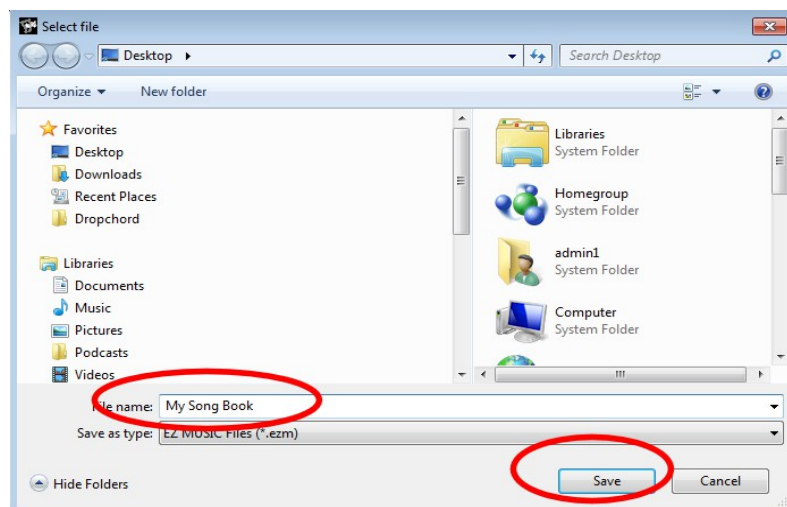
Launching EZ MUSIC for the first time.

EZ MUSIC is designed to be a self managing database that can manage and store all your content in it's power database. When you launch EZ MUSIC for the first time, you need to create your “ezm” database file which will be used to store everything you add to EZ MUSIC.

To do this, launch EZ MUSIC by clicking on it's desktop icon. When the program launches you will see the following window. Tick the “Create new database...” button, and press “Finish”.



A new window will now appear. Please create / select a folder where you would like to store your ezm file, and give it a name. Once ready, press Save.

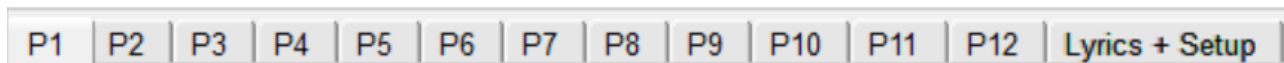


EZ MUSIC is now ready for use.

It's good practice to also make sure you keep a backup copy of your ezm file in a safe place. If you install EZ MUSIC on more than one PC you own, it also makes sense to use the same file on both machines so you don't have to do the same work twice when adding content. This single file is a database file and it will store all the content you add to EZ MUSIC.

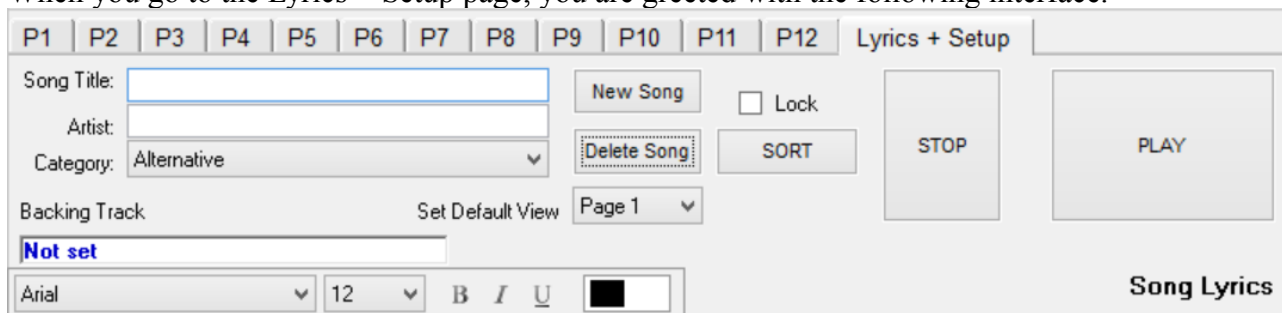
Graphical User Interface Overview

Across the top of the screen are 13 tabs, numbered P1 to P12, and then Lyrics + Setup.



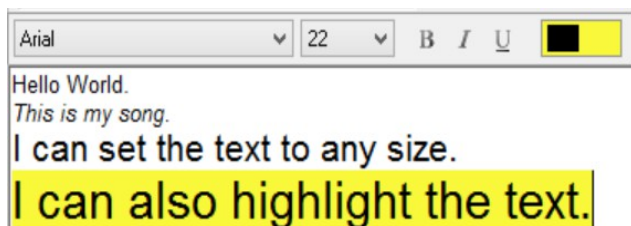
These Tabs are your pages for the current selected song. A single song can contain 12 pages of sheet music, which you insert into the P1 to P12 tabs. The Lyrics + Setup Tab is where you can type in the Lyrics to your song, and set the default options for your current song, as well as access the Audio Player.

When you go to the Lyrics + Setup page, you are greeted with the following interface.

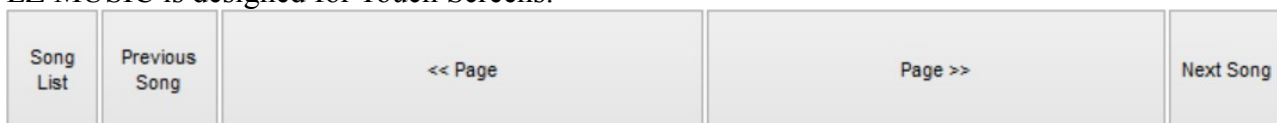


- Song Title: is where you type in the name of your song.
- Artist: is where you type on the name of the artist who wrote the song.
- Category: is where you can set the music type.
- The button “New Song” is pressed to create a new Blank Song.
- The button “Delete Song” if pressed with ask you are you sure you wish to delete the selected song. If you press Yes, the selected song will be permanently deleted from EX Music.
- Set Default View: This is a drop down menu that allows you to select Page 1 to 12 or Lyrics + Setup as the default page. What this means is you can set the default page to load when the song is selected. For example, if your song does not contain any sheet music and you just want to access the Lyrics and the Audio player, then you would set the default view to “Lyrics + Setup”. This setting is unique to the selected song. So for each song you can use a different setting.
- Lock: Ticking this box locks in your settings and prevents them from being accidentally changed. It his highly recommended that you enable this option when you have your song fully setup just how you like it.
- Sort: Pressing this button will display a small popup menu that will allow you to sort your library anyway you like. Alphabetically and so on.
- Play / Stop: Pressing these buttons will start and stop the Audio Player.
- Backing Track (Not Set): Click this option to add a backing track to your Song. Please note that when you add a backing track, you no longer need to keep your original file on your PC.

Lyrics View allows you to customise the appearance of your song. You can use any font you like, you can also change the size of the text to any size you like. You can even highlight your text in many different colours, much the same as if it were a sheet of paper and you had a luminous highlighter in your hand. An example of some of your options can be seen in the following image.

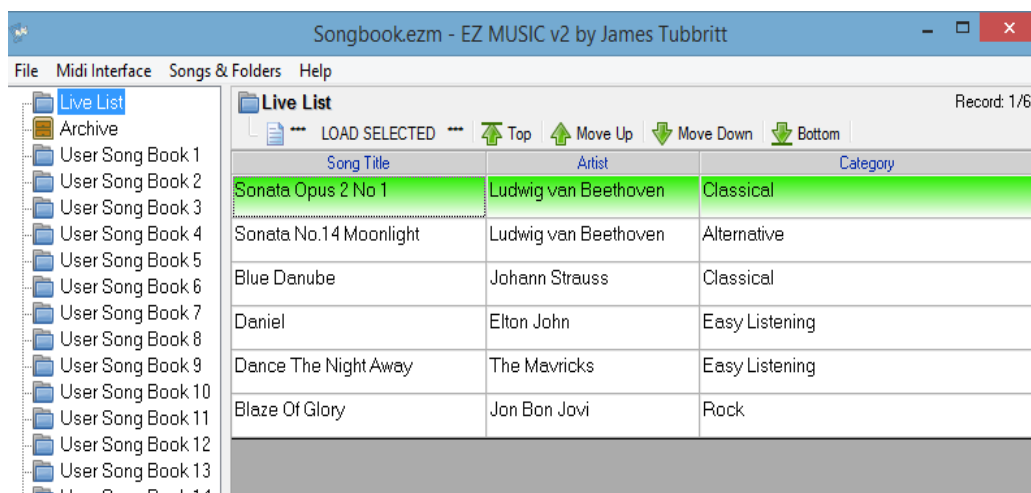


EZ MUSIC is designed for Touch Screens.



- Song List: Pressing this button will display a list of all your songs currently in EZ MUSIC.
- Previous Song: Pressing this button will make EZ MUSIC go back one song in the order you have them sorted.
- << Page: Pressing this button will turn the page left for the current song.
- Page >>: Pressing this button will turn the page right for the current song.
- Next Song: Pressing this button will make EZ MUSIC go to the next song in the order you have them sorted.

Main Interface

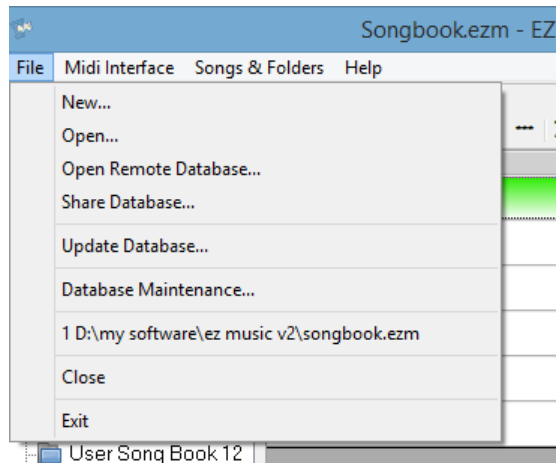


A single EZ MUSIC database can contain up to 32 song books as shown in the image above to the left. When you Touch/Click on a Song Book, it's songs are displayed in the main window to the right.

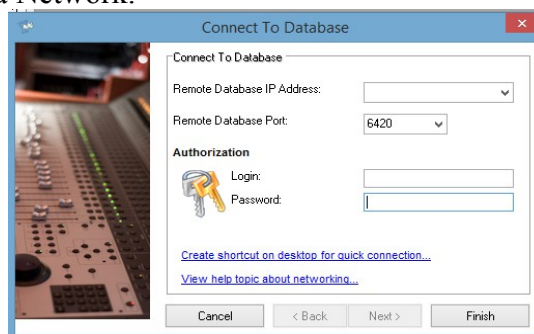
- To load the selected song, simply press ***** LOAD SELECTED ***** on the screen.
- Pressing the Top of List button will jump to the first song on the list.
- Move Up will go up 10 songs from your currently highlighted song. This is a useful feature

- for Touch Screen users who do not want to reach for the scroll bar.
- Move Down is the opposite of Move Up in that it will move you down 10 songs from the currently selected song, again, for the benefit of Touch Screen users.
- Bottom of List jump to the last song in the list.

File Menu

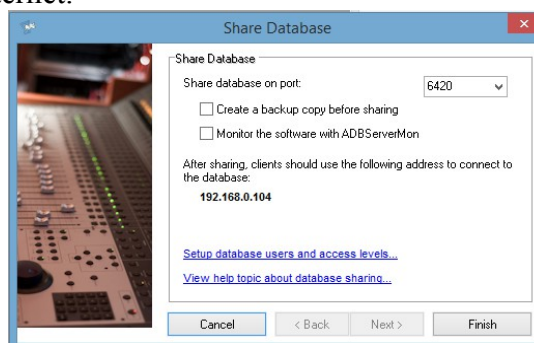


- New – (See Launching EZ MUSIC for the first time on page X)
- Open – This option allows you to open an existing EZ Music file.
- Open Remote Database... - this option is Intended for opening a EZ Music file another PC or user is Sharing over a Network.



To login to a remote database, the User / PC that is sharing the database will provide you with their IP address, the Port Number they are sharing their database on, and a user name / password to login if required. Enter in the relevant information and press Finish to connect to the Remote EZ Music File.

- Share Database – This option allows you to share your EZ Music file in real time over a local network and internet.



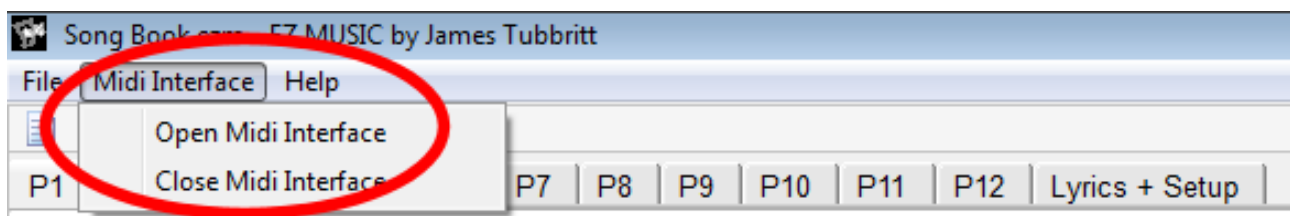
- Share database on Port: This allows you to select a Port Number to share your database. You can choose from the 4 populated into the drop down list or manually enter a value of your own choice.
- Monitor the software with ADBServerMon – This function will monitor the connection to the database. If for some reason connection is lost, there's a crash or some other unforeseen issue, ADBServerMon will relaunch EZ Music and restore network connections automatically.
- 192.168.0.104. This is the IP address remote users on a local network will need to know to login to your EZ Music Song Book. When sharing, you will need to tell them what IP address is displayed so they can login. If you are trying to share EZ Music over the Internet it is recommended you use a Static IP address on your PC. You will also have to configure your router to allow connections from the Internet by using Open Port / Port Forward, or DMZ. Because these are function of your router, please refer to the manual of your router.
- Update Database – This function is used for applying Software Patch Updates to the software. If such an update is released, the necessary instructions will come with that patch update.
- Database Maintenance – This function allows you to defrag your database (Your personal EZ Music File) if you find at some point it's become slow due to large amounts of data being added and removed constantly. For normal use, it is expected you will likely never need to optimise the database. It is **STRONGLY** recommended however that if you are running the optimisation that you create a backup copy of your database before doing so.
- Database Maintenance – Backup Tab. Here you can get EZ Music to create a backup copy of your personal EZ Music File when you launch EZ Music. This is ideal as a means of protecting your database from corruption due to some unforeseen issue caused by Power Loss, Power Surge or some other potential major issue. With this function enabled, EZ Music will create a backup copy of your personal file in the same folder upon launching it.
- Create a Backup Copy Every... This allows you to set a path to have your database backed up to, as well as how often it happens.

Midi Interface

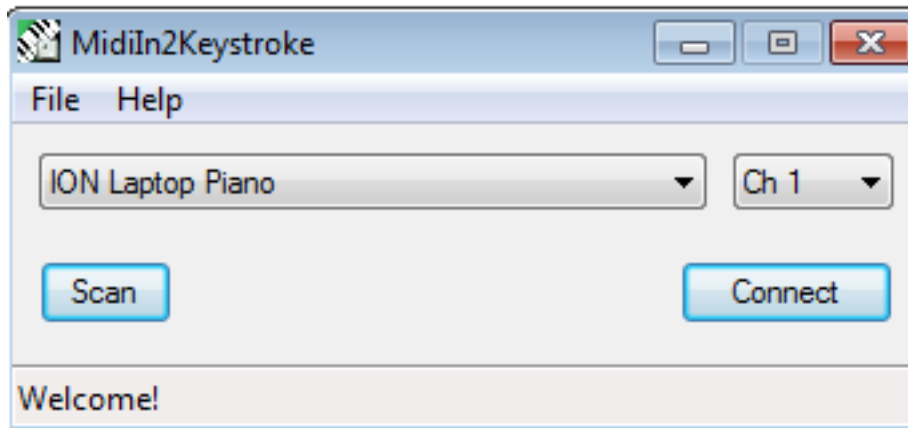
EZ MUSIC can be fully controlled over any midi interface. You can for example sequence in page turns into your Sequencer, or assign any function to a foot pedal or external controller.

Every function you need for performing live has been considered and carefully integrated into EZ MUSIC for complete hands free operation.

To launch the midi interface, click on the menu “Midi Interface” and select “Open Midi Interface”. To close the mid interface, click on the menu “Close Midi Interface” or click on the X in the top right of the midi interface window to close it as you would any traditional program.



The Midi Interface to Keystrokes Window.



Simply use the drop down menu to select your connected device. If no devices are displayed on the list, press “Scan” to refresh the list. Once you have selected your device from the list, select the midi channel you wish communicate on. When you are ready then press “Connect” to start the midi interface.

You can now minimise the window and return to the EZ MUSIC window.

Please note: The midi interface to keystrokes tool converts your midi messages into keystrokes on your computer keyboard, so after you have launched it, to send the keystrokes to EZ MUSIC, simply make sure that the EZ MUSIC window is your top application and selected.

Midi Control Values

To control the different functions of EZ MUSIC remotely you can either transmit note data of any velocity to EZ MUSIC, or alternatively you can transmit Control Change commands.

<u>Function</u>	<u>Note</u>	<u>CC#</u>	<u>Comment</u>
• Page Left	C0	000	Turns the page left.
• Page Right	C#0	001	Turns the page right.
• Music View	D0	002	Switches to Music view when in Song List view.
• Song List	D#0	003	Switches to Song List view when in Music View mode.
• Previous Song	E0	004	Goes back (up) a song in Song View and Music View.
• Next Song	F0	005	Goes forward (down) a song in Song View and Music View.
• Stop Music	F#0	006	Stops the backing track currently playing.
• Play Music	G0	007	Starts the backing track currently selected.
• Display Lyrics	G#0	008	Jumps to Lyrics + Setup page when in Music View mode.
• Page 1	A0	009	Jumps to Page 1 when in Music View mode.
• Page 2	A#0	010	Jumps to Page 2 when in Music View mode.
• Page 3	B0	011	Jumps to Page 3 when in Music View mode.
• Page 4	C1	012	Jumps to Page 4 when in Music View mode.

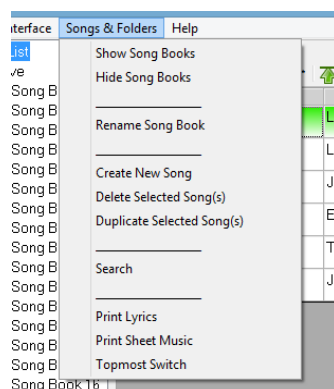
- Page 5 C#1 013 Jumps to Page 5 when in Music View mode.
- Page 6 D1 014 Jumps to Page 6 when in Music View mode.
- Page 7 D#1 015 Jumps to Page 7 when in Music View mode.
- Page 8 E1 016 Jumps to Page 8 when in Music View mode.
- Page 9 F1 017 Jumps to Page 9 when in Music View mode.
- Page 10 F#1 018 Jumps to Page 10 when in Music View mode.
- Page 11 G1 019 Jumps to Page 11 when in Music View mode.
- Page 12 G#1 020 Jumps to Page 12 when in Music View mode.
- Page Up A1 021 Song List mode, jump up a page of songs on the song list.
- Page Dn A#1 022 Song List mode, jump down a page of songs on the song list.
- Top of List B1 023 Song List, jump to first song in the list.
- Bottom of List C2 024 Song List, jump to last song in the list.
- Add Song C#2 025 Calls the menu to add a new song. (Confirmation needed)
- Delete Song D2 026 Calls the menu to delete a song. (Confirmation needed)
- Enter D#2 027 Presses Windows ENTER Key. (Confirmation Command)
- Archive List E2 028 Jump to the “Archive List” song book.
- Live List F2 029 Jump to the “Live List” song book.

Note: Some Midi Controllers may use a different scale (1 Octave Lower) than the note values displayed on the table above. If when you set C0 Page Left for example and you test it, only to find that the software jumps to Page 4, then the controller your using is one that uses the 1 octave lower scale.

When setting up EZ Music to work with that kind of controller, simply take 1 octave from the note value displayed above on the table. For example, C0 becomes C -1

Songs & Folders

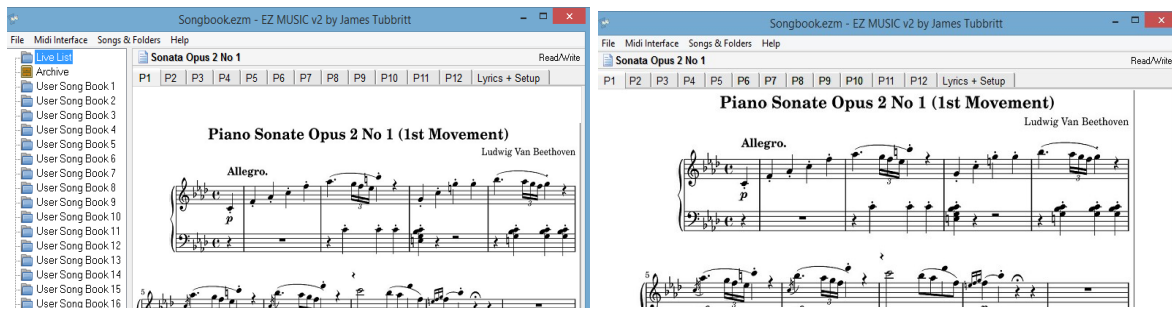
This menu offers a range of tools for managing your songs and song books.



- Show Folders / Hide Folders. This allows you to show and hide your song books in order to keep your interface as clean as possible for the tasks your performing. For example, while working on your song books, moving songs around, and so on, changes are you will want to see all your song books. Where on stage performing you will likely only be working from one song book so there's no reason to have all the song books displayed taking up screen space that is better used for reading your sheet music in this case.

Song Books Shown

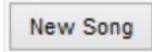
Book Books Hidden.



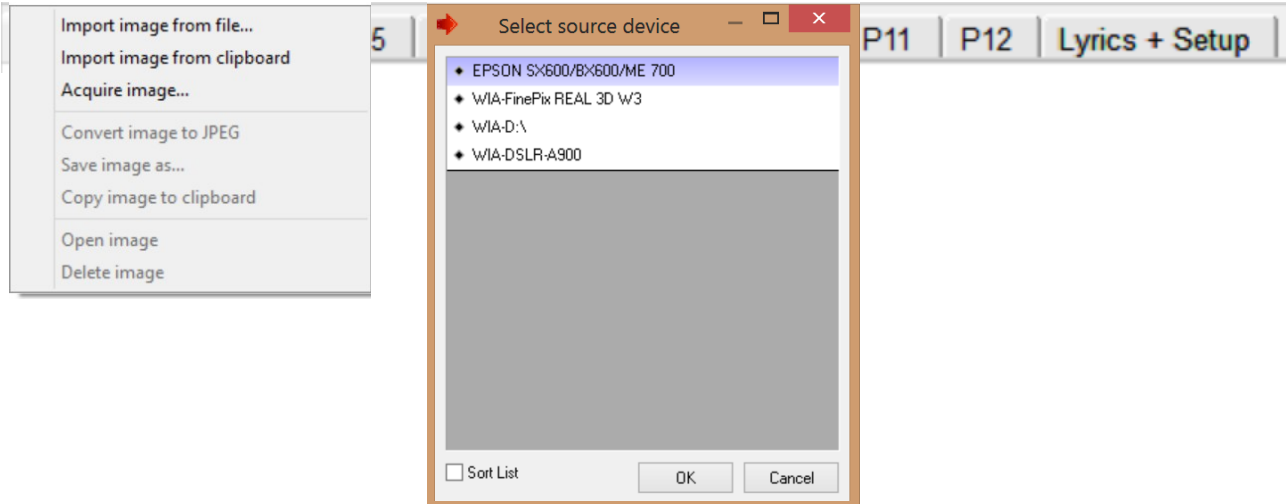
- **Rename Song Book** – This allows you to freely rename the selected song book.
- **Create New Song** – This allows you to add a new song to the selected song book.
- **Delete Selected Song(s)** – This allows you to delete the selected song. You can also select more than one song at the same time if you wish to delete songs in batches.
- **Duplicate Selected Song(s)** – This allows you to create a second copy of the selected song or songs. Useful if you wish to have the same songs available in different song books.
- **Search** – Using this function will allow you search for a song. This will preform a search in all song books and display the results in a small menu bottom left where you can select for viewing.
- **Print Lyrics** – Using this function will allow you to print out the words of songs you have on the Lyrics Page.
- **Print Sheet Music** – This function generates a local temporary web page in your Internet Browser that you can then print out in order to have a physical copy of your sheet music.
- **Keep Top Most** – This function acts like a “sticky pin” to keep EZ Music as the front program. For example when this function is selected, if you open another program on your Tablet it will load behind EZ Music and not be allowed to obstruct your view of EZ Music. Select the option “Keep Top Most” again to switch off this function off.

Scanning Sheet Music (Adding a Song)

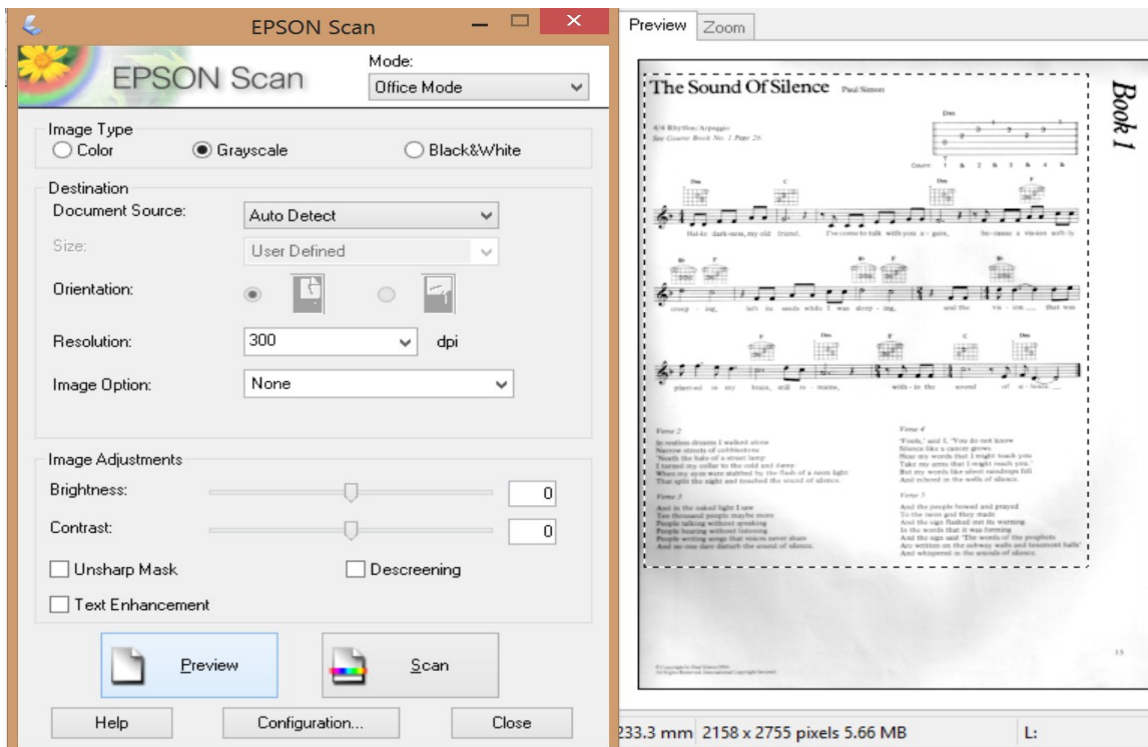
Lets start by adding a new song. Go to the Lyrics + Setup page and press “New Song”



EZ MUSIC will now automatically jump to Page 1 (P1)



At this stage you will see a blank screen. Right click anywhere in the large white window area of the screen. For those using a Touch Screen computer, simply hold your finger in the screen for 3 seconds and then let go. The window below on the left will appear. Select Acquire image from the menu. When you do this, the window below on the right will appear allowing you to select your scanner or any other devices capable of sending an image to EZ MUSIC on your Network or PC.

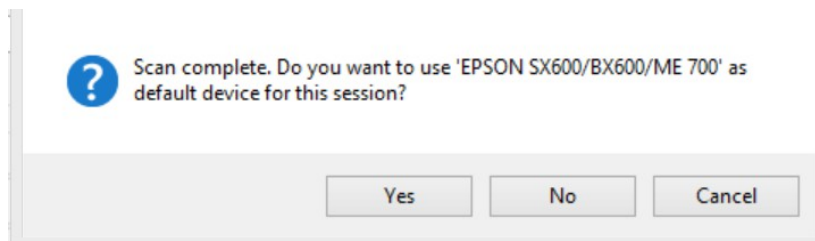


After you select your scanner, it's own software will load inside EZ MUSIC. Set your resolution to 300DPI, and set the Image Type to Gray scale. Press Preview to see your Sheet Music. If your

happy that you have it in the scanner correctly aligned, press scan to start scanning your song. Once the scan has completed, your song will automatically appear on EZ MUSIC so you can close the scanner window. That is all you need to do. There are no files to manage. EZ MUSIC has received the data from your scanner processed, and optimised it.

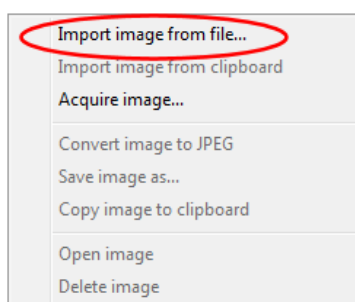
You can now go to P2 and scan in another page if you like and continue to complete your song.

To speed things up even further, after you scan your first page of music, EZ MUSIC will ask you if you would like to use the same scanner for this session. Selecting Yes will make EZ MUSIC go straight back to the same scanner each time without asking to you select a scanner.



Adding Sheet Music by other means.

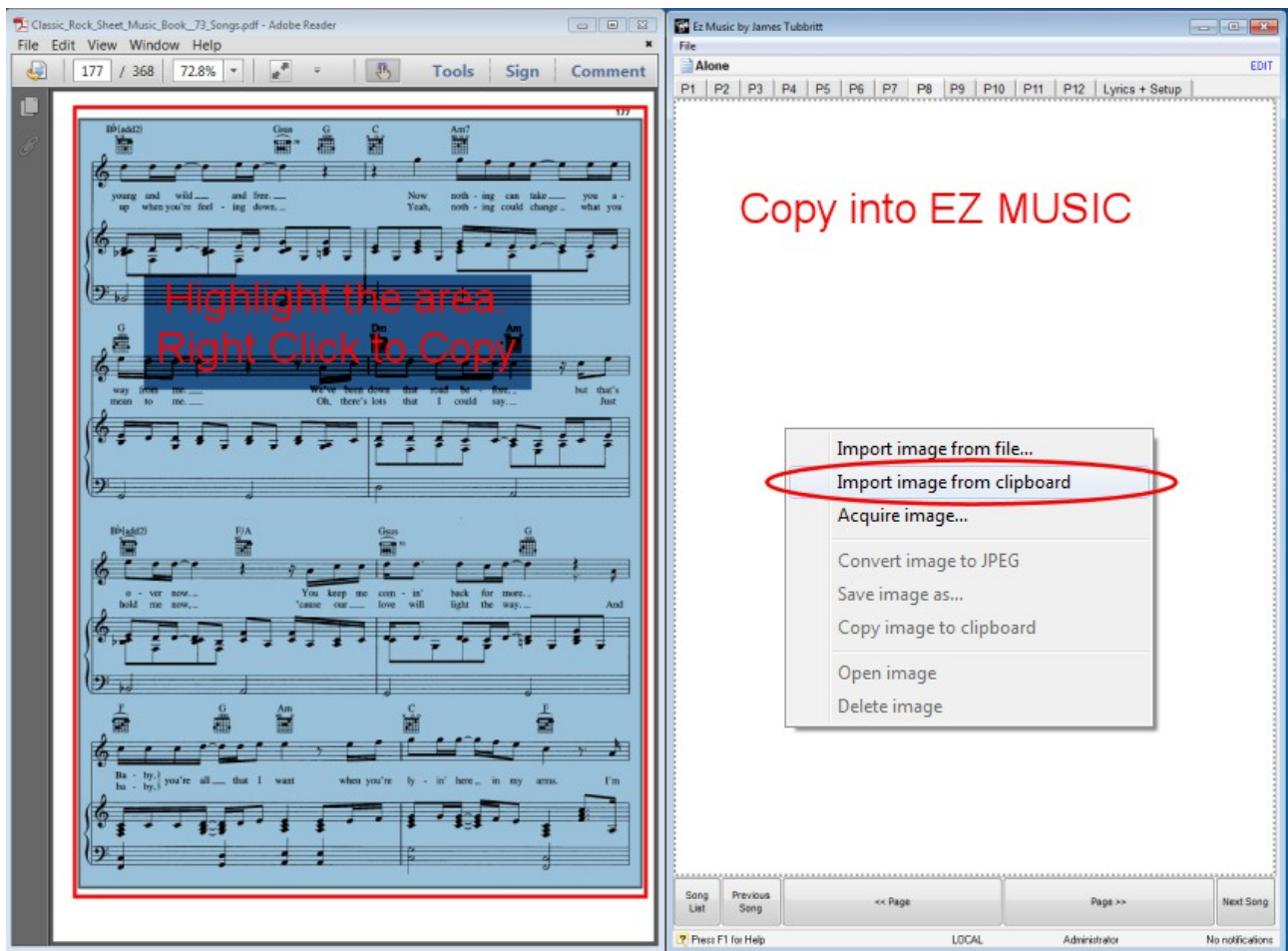
You can add sheet music or printed documents to EZ MUSIC by other means that scanning. EZ MUSIC accepts file your image files directly. It supports JPG, BMP, PNG and GIF files.



As with everything EZ MUSIC does, in order to keep things very simple, when you import your image files into EZ MUSIC, it will memorise them. This means no new files are generated, and you do not need to keep a copy of your original files on your PC. EZ MUSIC truly memorises everything itself, and you never have to worry about files.

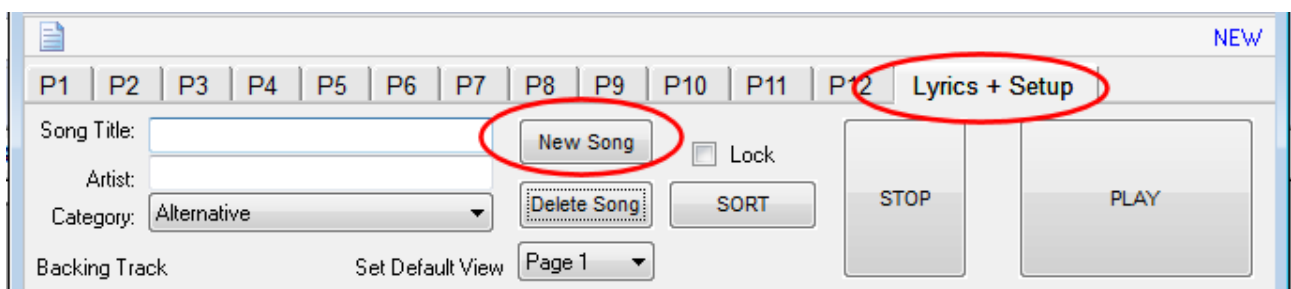
In addition to being able to import files from many sources, you can also use windows Clip Board. This is a very useful feature if you are searching for sheet music online and you find a jpg. Simply right click on the image on the internet, right click on a blank page in EZ MUSIC and use the option Import image from clipboard to add it to EZ MUSIC. There is absolutely no need to download the file off the internet. EZ MUSIC will memorise it.

You can even copy and paste from PDF files directly into EZ MUSIC. As shown in the image below, Acrobat Reader is opened on the left and displaying sheet music. Simply highlight the section you want to import into EZ MUSIC, right click and select Copy. Now go to a blank page in EZ MUSIC and right click. Select Import from Clipboard and the sheet music will be added to EZ MUSIC. You can in fact directly import any image based content that can be right clicked and copied to the clipboard directly into EZ MUSIC.

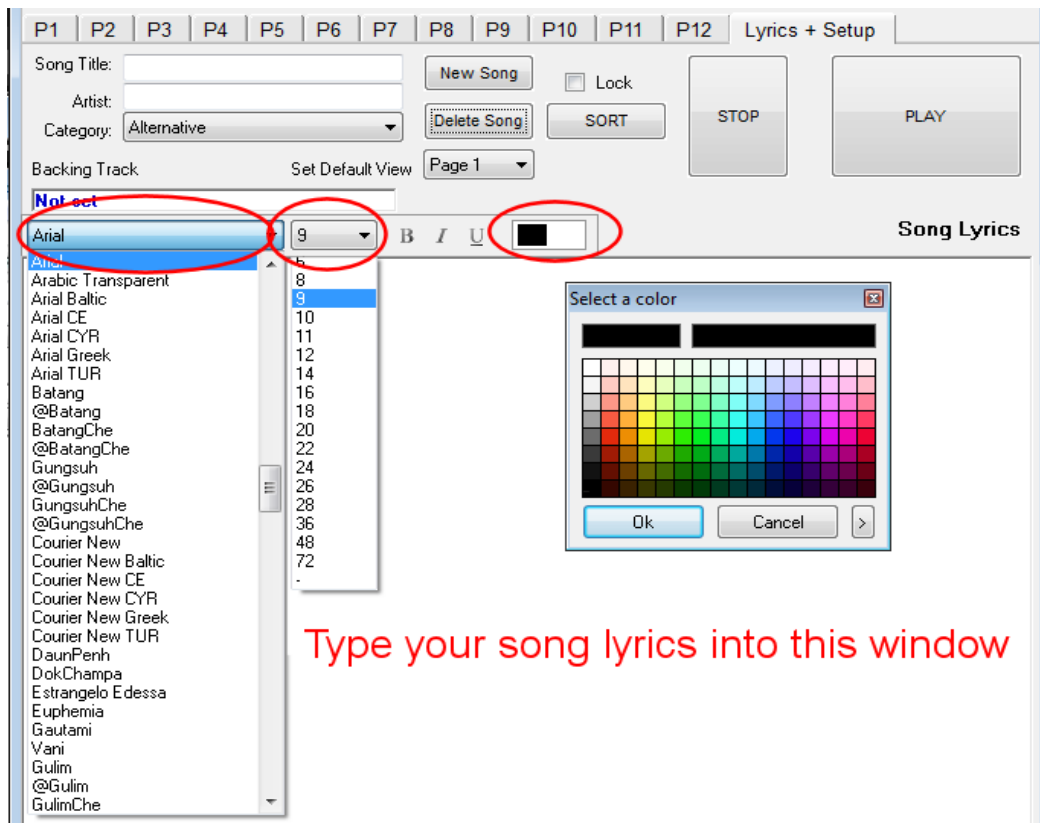


Adding a Lyrics Song

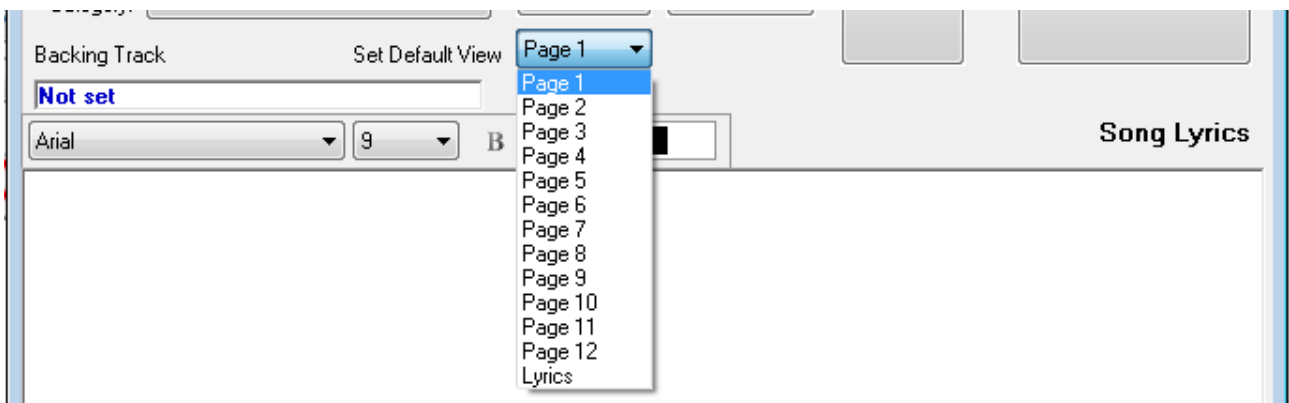
Go to the Lyrics + Setup Tab and press New Song.



When entering the Lyrics of a song, you have many of the same tools you would be familiar with when using popular programs like Microsoft Word. Select your favourite font, choose the font size, and you can even use different colours and highlight your lyrics.



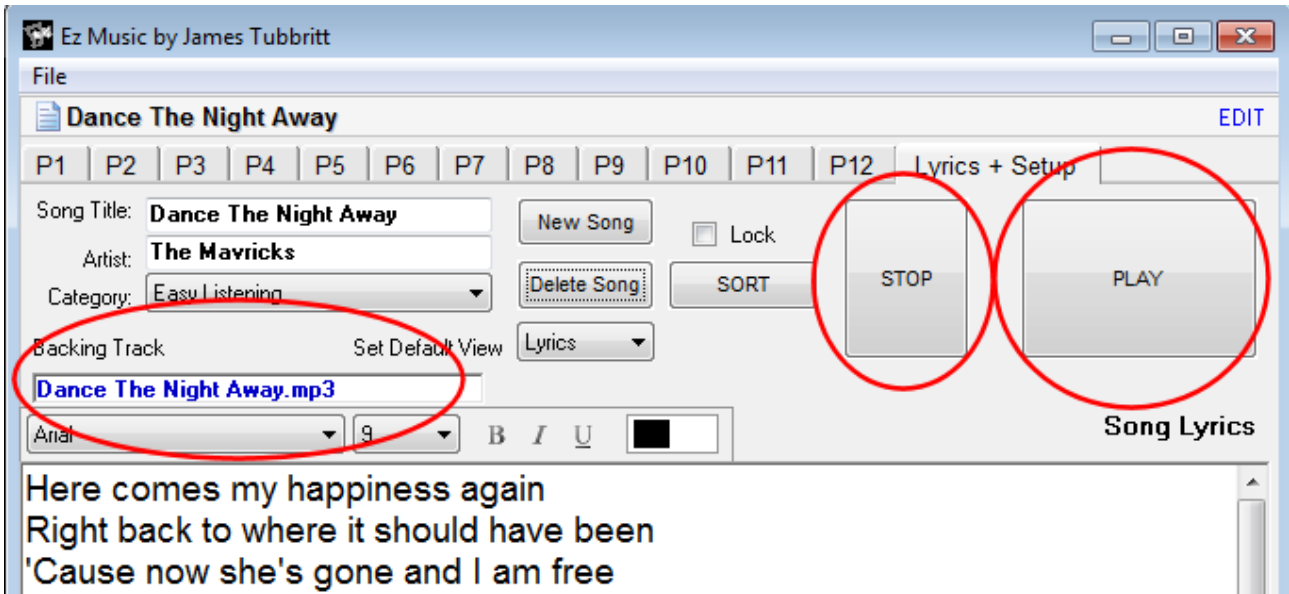
When you have typed up your Lyrics, set the Default View to “Lyrics”. This function tells EZ MUSIC what page to default to when the song is selected. For example, you will likely set this to Page 1 for songs that contain sheet music so that the first page of your sheet music is loaded when you select the song, but you may for example only need the Lyrics for the next song you are performing. This allows you to use EZ MUSIC for both sheet music and lyrics without you having to unnecessarily select pages during your performance.



Adding Backing Tracks

EZ MUSIC supports the playback of Wave, Mp3 and Midi Files. To add a backing track, simply click on the backing track box indicated in the left red circle. EZ MUSIC will ask you for the location of your backing track. Simply navigate to your file and press OK to add it to EZ MUSIC. Once you have added your backing track, EZ MUSIC will automatically memorise it. Once memorised you no longer need the original file on your PC. EZ MUSIC memory will be able to

play the song at any time. To play your song, Press Play. To stop playback, press STOP.

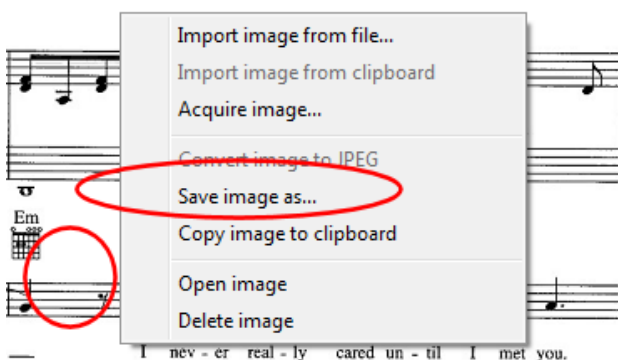


Exporting Backing Tracks or Sheet Music

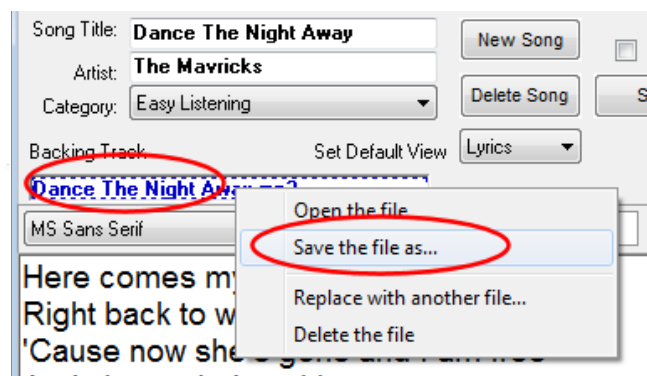
While EZ MUSIC makes having to deal with files for each and every page and every backing track totally obsolete, there will no doubt come a time when you want to export a backing track or a sheet of music out of EZ MUSIC to share with a friend, or for some other purposes.

As with everything EZ MUSIC does, this is greatly simplified.

To export Sheet Music, simply right click on the page you want to export, and then select the option "save image as" from the menu.



To export a backing track, simply right click on the backing track, and select "Save the file as" from the menu.



Keyboard Short Cuts

EZ MUSIC has many keyboard short cuts (Hot Keys) at the core of it's design that allow you even more detailed control over every aspect of it's functions. You can jump to a specific page in a song, create a song, start / stop the backing tracks and much more. Here is a list of all the short cut keys.

• Add New Song	CTRL+N
• Delete Song	CTRL+D
• Display Lyrics	CTRL+W
• Play Backing Track	CTRL+P
• Stop Backing Track	CTRL+O
• Next Song	CTRL+>
• Previous Song	CTRL+<
• Page Right	CTRL+R
• Page Left	CTRL+L
• Show Music (Load Selected)	CTRL+M
• Show Song List	CTRL+S
• Jump to Page 1	CTRL+1
• Jump to Page 2	CTRL+2
• Jump to Page 3	CTRL+3
• Jump to Page 4	CTRL+4
• Jump to Page 5	CTRL+5
• Jump to Page 6	CTRL+6
• Jump to Page 7	CTRL+7
• Jump to Page 8	CTRL+8
• Jump to Page 9	CTRL+9
• Jump to Page 10	CTRL+E
• Jump to Page 11	CTRL+T
• Jump to Page 12	CTRL+Y

EZ MUSIC on more than one PC.

If for example you use a Tablet PC live, but in your Studio you wish to use your desktop PC to add all your music, backing tracks and Lyrics to EZ MUSIC.

Simple install EZ MUSIC on both computers and the ezm file you create can be loaded and freely shared between both computers. (for networking see page 8)

Think of it as if you are simply opening a Word Document. A ezm file is a single self contained file that will hold all your data, and you can freely open it on your other computers that are running EZ MUSIC and all your music, backing tracks and lyrics will be available.

Tips and Suggestions

The following is a short list of quick tips and suggestions for making the most of EZ MUSIC.

- Always make sure you have a backup copy of your “ezm” file stored in a safe place in the event that you have a hard disk failure, or some unforeseen accident.
- Try make use good use of the “Live List” and “Archive List” virtual song book lists. It's highly recommended that you keep the songs you play often in your “Live List” and keep everything else in Archive List. This way your favourites are much easier to access from a shorter list of songs.
- When scanning in your sheet music, use a setting of 300DPI and Grey Scale. While you can scan in at higher resolutions, there is no benefit as EZ MUSIC will reformat the image to the optimal setting.
- If your adding scans from jpeg files you have, or backing tracks. Once the files have been added, please note that you do not need to keep the source files on your PC for EZ MUSIC to work. EZ MUSIC will memorise all the data you load into it.
- Don't forget to set your “Default Page” on the Lyrics + Setup tab when you have added your song. Remember, when you go to play your song, this is the setting that makes EZ MUSIC open the song on the right page.
- Don't forget to activate the “Lock” tick box when you have your song setup exactly how you like it. This will prevent accidental changes being made to that song.
- When you are controlling using EZ MUSIC over midi, to avoid any dropped commands, make sure that the EZ MUSIC windows is your top window and that it's selected. If it is not selected, EZ MUSIC will not receive the midi commands.

EZ MUSIC

Version 2.0



Irish Acts Studio

Copyright 2013 – James Tubbritt – Irish Acts Studio – Web <http://www.irishacts.com> – Email irishacts@irishacts.com - Tel +353 (0)86 6077318